

somerville
stock exchange

QUARTERLY REPORT
March 31 – July 1, 2012

ABOUT THE EXCHANGE

The Somerville Stock Exchange is a community forum, a fundraiser, and a different take on what a stock market can be.

“Stockholders” earn shares two different ways: by sharing what they’re doing to make Somerville a better place in the forum; or by donating money to one of our partner nonprofits.

The forum: A way to earn stocks, and see what others are doing to make Somerville a better place

First, stockholders can get shares by sharing what they’re doing to make Somerville a better place. This can include actions to make the community a better place, like helping a neighbor, or volunteering somewhere. Or doing something for the environment, like composting or riding a bike. Or doing something for the city’s creative life—like volunteering at an arts event, or writing a play, or being in a band.

All of this information then goes into the project’s forum—where others can read them, and get inspired. The forum will also make a nice snapshot of what Somerville is all about.

Want to add to the forum? Great! Just email us at somerville.stock.exchange@gmail.com to get the ball rolling.

Earning stocks by donating to a partner nonprofit

The second option is to earn shares by donating to one of our partner nonprofits—the Somerville Homeless Coalition, the Somerville Arts Council, and Somerville Climate Action.

These three nonprofits do amazing work for our community, so we think that supporting them will help make our community a better place.

If you send them money, let us know, and we'll issue you stock!
Email us at somerville.stock.exchange@gmail.com

How stocks work

Stocks aren't really worth any money—they're more of an indicator of how active people are in Somerville's community, environment, and creative life.

When stockholders tell us good things they've done for the city, stock prices go up. When we find out things that have negatively affected Somerville, stock prices go down.

Think of it as a game. Or a metaphor.

Who's behind this

This project is run by Somerville artist Tim Devin. All proceeds from the sale of shares go to one of three Somerville nonprofits: the Somerville Homeless Coalition; Somerville Climate Action; and the Somerville Arts Council.

For more information on this project, see our website, at : <http://timdevin.com/somervillestockexchange.html>

Or email us at somerville.stock.exchange@gmail.com

TABLE OF CONTENTS

OVERVIEW : MARCH 31 – JULY 1, 2012	5
Graph comparing stock values	5
Chart comparing stock values	6
OVERVIEW : COMMUNITY STOCKS	7
Graph showing changes in community stock values	7
Chart showing changes in community stock values	8
Reasons that the community stocks changed in value (what community members did; news items)	9
MARCH 31 – APRIL 15, 2012	9
APRIL 16 – MAY 1, 2012	10
MAY 2 – MAY 15, 2012	11
MAY 16 – JUNE 1, 2012	14
JUNE 2 – JUNE 15, 2012	15
JUNE 16 – JULY 1, 2012	17
OVERVIEW : ENVIRONMENT STOCKS	19
Graph showing changes in environment stock values	19
Chart showing changes in environment stock values	20
Reasons that the environment stocks changed in value (what community members did; news items)	21
MARCH 31 – APRIL 15, 2012	21
APRIL 16 – MAY 1, 2012	22
MAY 2 – MAY 15, 2012	23
MAY 16 – JUNE 1, 2012	24
JUNE 2 – JUNE 15, 2012	26
JUNE 16 – JULY 1, 2012	27
OVERVIEW : CREATIVITY STOCKS	29
Graph showing changes in creativity stock values	29
Chart showing changes in creativity stock values	30

Reasons that the creativity stocks changed in value (what community members did; news items)	31
APRIL 16 – MAY 1, 2012	33
MAY 2 – MAY 15, 2012	35
MAY 16 – JUNE 1, 2012	36
JUNE 2 – JUNE 15, 2012	37
JUNE 16 – JULY 1, 2012	38

LIST OF STOCKHOLDERS	39
-----------------------------	-----------

OVERVIEW : MARCH 31 – JULY 1, 2012

GRAPH COMPARING STOCK VALUES

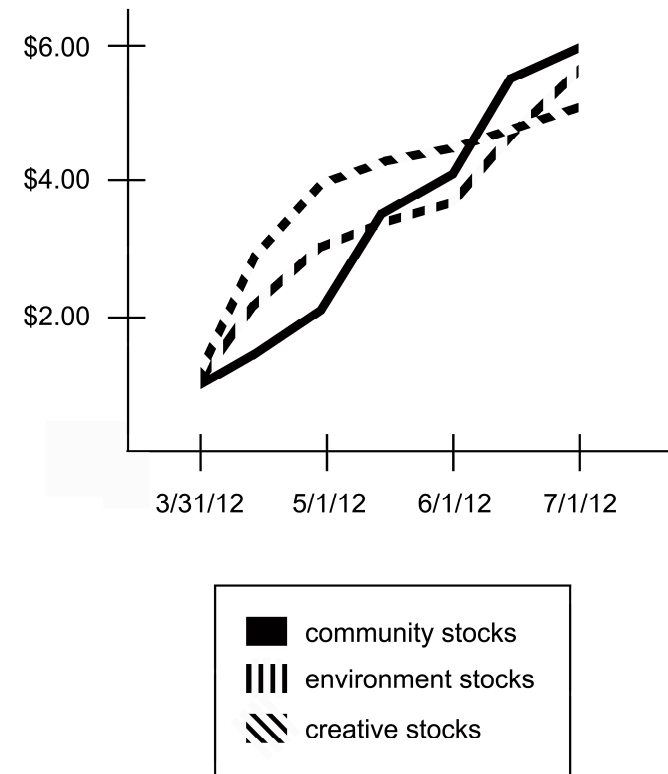
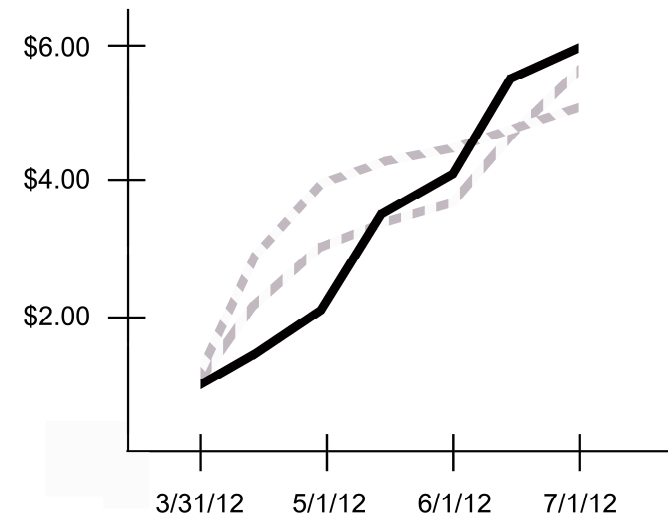


CHART COMPARING STOCK VALUES

	Community stocks	Environment stocks	Creativity stocks
March 31, 2012	\$1.00	\$1.00	\$1.00
April 15, 2012	\$1.48	\$2.21	\$2.87
May 1, 2012	\$2.11	\$3.24	\$3.92
May 15, 2012	\$3.51	\$3.37	\$4.22
June 1, 2012	\$4.04	\$3.63	\$4.43
June 15, 2012	\$5.47	\$4.59	\$4.67
July 1, 2012	\$5.85	\$5.53	\$4.98

OVERVIEW : COMMUNITY STOCKS

GRAPH COMPARING COMMUNITY STOCK VALUES



**CHART SHOWING CHANGES IN
COMMUNITY STOCK VALUES**

	Community stocks value	Increase over previous period	% increase
March 31, 2012	\$1.00	n/a	n/a
April 15, 2012	\$1.48	\$0.48	48%
May 1, 2012	\$2.11	\$0.63	43%
May 15, 2012	\$3.51	\$1.40	66%
June 1, 2012	\$4.04	\$0.53	15%
June 15, 2012	\$5.47	\$1.43	35%
July 1, 2012	\$5.85	\$0.38	7%

**REASONS THAT THE COMMUNITY STOCKS CHANGED IN
VALUE (WHAT COMMUNITY MEMBERS DID; NEWS ITEMS)**

MARCH 31 – APRIL 15, 2012

Reason	<u>Positive/</u> <u>Negative/</u> <u>Neutral</u>
An anonymous person bought a sandwich for a homeless person.	(Positive)
Anyahlee Suderman directs the Art Program for the Walnut Street Center, where she works with over 90 adults with disabilities. The Center is a non-profit, human service agency providing residential, day, employment and individual support services to adults with developmental disabilities.	(Positive)
A group of Somervillians banded together to fight the MBTA fare increases. While the fare hike ended up going through, it was nice to see people working together like this.	(Positive)
An anonymous person donated money to the Somerville Homeless Coalition.	(Positive)
Jon Bernhardt helped organize TedXSomerville, which was a day-long event, featuring talks by influential Somervillians	(Positive)
EA organized benefit raffles for the Somerville Homeless Coalition.	(Positive)
Loki has produced a large number of public events and fundraisers.	(Positive)

THE SOMERVILLE STOCK EXCHANGE

APRIL 16 – MAY 1, 2012

<u>Reason</u>	<u>Positive/ Negative/ Neutral</u>
On April 13th, Somerville was voted the best place to live in the Boston area, in the Boston Phoenix's "Best of Boston" readers' poll.	(Positive)
David T. volunteers weekly as an ESL instructor in a class run by the Welcome Project.	(Positive)
In late April, tensions and disagreement came to the forefront in Union Square over Somerville Community Corporation's proposed affordable housing development. Local property owners were unhappy about the plan.	(negative)
On April 21st, the Somerville Homeless Coalition had its annual fundraiser. They brought in over \$60,000, which will go to support the homeless and hungry in our community	(Positive)
Seth Itzkan hosts the monthly meetings for a local volunteer group at his office space in Davis Square.	(Positive)
On Saturday, April 28th, dozens of people helped clean public parks, as part of the city's annual Spring Clean-Up.	(Positive)

FIRST QUARTERLY REPORT : COMMUNITY STOCKS

MAY 2 – MAY 15, 2012

<u>Reason</u>	<u>Positive/ Negative/ Neutral</u>
Somerville Voices is a website that serves as an independent, open forum about Somerville. It is moderated by Barry Rafkind (who is also the site administrator), Eileen Feldman and Alain Jehlen . Linda Conte , David Dahlbacka , and a few other anonymous people also volunteer their time to help run the site.	(Positive)
An anonymous person donated money to the Somerville Homeless Coalition.	(Positive)
Somerville Moms was recently named one of the best parenting list serves in the country by Babble, which is a news source about parenting. Somerville Moms is a list serv that "covers a wide range of parenting topics, such as what to expect when having a new baby and activity ideas for older children. Somerville Moms maintains a tight focus on activities and events for families in the area." A number of smaller, real-world parenting groups have formed because of the list; these groups have included people who trade babysitting duty, and parent get-togethers.	(Positive)
Eileen Feldman , volunteer director of the Community Access Project, spent more than a year and a half on making Citizen's Bank in Union Square become an accessible facility. First, she met with senior and nonelderly residents of Properzi Manor and Hagan Manor, who asked for her help in	(Positive)

MAY 2 – MAY 15, 2012 (CONT'D)

Reason

getting an accessible bank near where they live in Union Square. Next, she did research on what the bank needed to become accessible and got buy-in from bank managers and senior staff about this community need. They, in turn, got an agreement from their landlord and performed the design and construction. Because of her work, the Bank's stone step front landing was ground down to create an accessible and integrated front entrance and door; their parking lot was restriped, providing the necessary handicap parking spots; and the bank purchased a lower table for smaller people and wheelchair users, and changed their policies and procedures to accommodate individuals and families with disabilities

The Green Line expansion took two important steps forward in early May 2012. First, the city of Somerville began buying property for the expansion. Second, Boston Meteropolitan Planning Organization approved \$8.1M in funding for the Route 16 Green Line station. (Positive)

Joe Beckmann has a long-standing involvement in local politics and education issues. He began by serving on Capuano's Affordable Housing Task Force. This lead to him working with the Board of the Somerville Homeless Coalition, the Community Action Agency of Somerville, and the Somerville Community Corporation. He also did consulting for (Positive)

MAY 2 – MAY 15, 2012 (CONT'D)

Reason

the Regional Employment Board, which lead to interactions with the School Committee and the High School School Council. This experience, in turn, got him involved in politics in and out of schools--such as helping with some races for Aldermen and School Committee; working with teacher unions and educational tech advocates; working with people at the Harvard School of Education, Tufts and MIT; doing consulting work with media advocates and the Democratic Ward and City Committee-- and even working as an evening school and substitute teacher. To him, the most valuable themes of Somerville are multicultural and class divisions and alliances.

Positive/
Negative/
Neutral
(Positive)

THE SOMERVILLE STOCK EXCHANGE

MAY 16 – JUNE 1, 2012

<u>Reason</u>	<u>Positive/ Negative/ Neutral</u>
Jonah Petri actively advocates on transportation issues, mostly related to the extension of the Community Path to Lechmere and the Charles River.	Positive
Michael Messina helped run interactive Somerville's Green Line Challenge. Residents were encouraged to brainstorm ideas for improving Gilman Square, which is near one of the proposed Green Line stops. The Challenge was aimed at getting residents involved in the planning process	(Positive)
On May 20th, Progress Together had a "community congress," to decide what to do next. Over 50 parents got together to decide what the organization could do next for local education issues, now that it has successfully fought a proposed charter school. While they didn't decide on a single course of action, they all agreed to remain together as an organization, and explore what they could do next.	(Positive)
On May 19th, the Arts Council put together the second annual Porch Fest . Over 100 musicians gave free concerts from front porches of homes in Somerville. Many residents liked the feel of the event, and the chance to meet their neighbors. Others thought it was too loud, and disturbed their weekend.	(Neutral)

FIRST QUARTERLY REPORT : COMMUNITY STOCKS

JUNE 2 – JUNE 15, 2012

<u>Reason</u>	<u>Positive/ Negative/ Neutral</u>
Dvora Jonas is the president of the Friends of the Somerville Public Library. If anyone is looking to volunteer, there are lots of opportunities to work with the Friends on book sales and other events—which help support programming at the library.	(Positive)
The city reopened two renovated playgrounds: Morse-Kelly and Dickerman.	(Positive)
Kristin Parker donated money to the Somerville Homeless Coalition in honor of the Pilgrim--a monthly collection of writings by Boston's homeless community."	(Positive)
Warren Goldstein-Gelb works with immigrant families through the Welcome Project. He does this to help build the voice and power of immigrants to shape community decisions and institutions (such as schools, housing, and transportation).	(Positive)
On Tuesday, June 5th, the Somerville Public Library hosted their New Moms Support Group . This is a free event that happens twice a month, and is cosponsored by the Somerville Public Schools and Jewish Children's and Family Services	(Positive)

THE SOMERVILLE STOCK EXCHANGE

JUNE 2 – JUNE 15, 2012 (CONT'D)

<u>Reason</u>	<u>Positive/ Negative/ Neutral</u>
On Sunday, June 3th, the city shut down part of Broadway for the first SomerStreets festival of the year. Despite the rain, hundreds and hundreds of people came out to watch the parade, hear bands, and mingle with their neighbors	(Positive)
Ron Newman leads bike tours for the Somerville Bicycle Committee and the Somerville Historic Preservation Commission. He also helps moderate the Davis Square Live Journal, which is an online forum where Somerville community members discuss issues that affect the city.	(Positive)

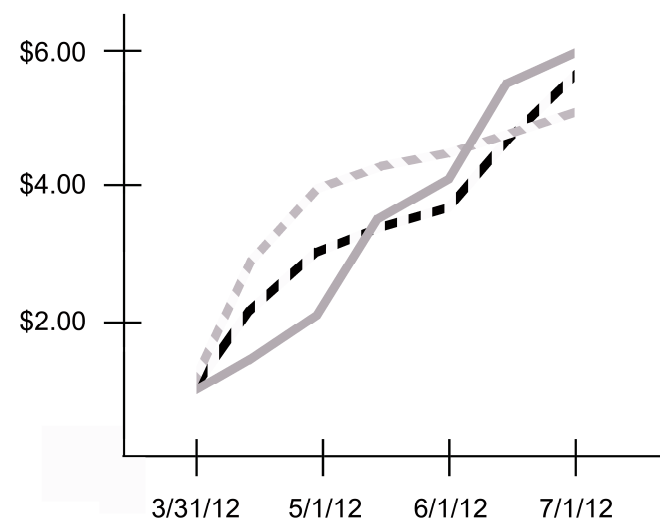
FIRST QUARTERLY REPORT : COMMUNITY STOCKS

JUNE 16 – JULY 1, 2012

<u>Reason</u>	<u>Positive/ Negative/ Neutral</u>
Jenna Stark participates in the Somerville community by volunteering on Thursday nights and Saturday mornings for the Union Square Farmers markets.	(Positive)
Sara Davies is volunteering for the summer at the Swirl & Slice farmer's market on Thursday nights.	(Positive)
On 6/25, the Council on Aging held an open meeting to plan future inter-generational LGBT events.	(Positive)
Susan Putnins volunteers at the Union Square Farmer's Market and at Swirl & Slice.	(Positive)

OVERVIEW : ENVIRONMENT STOCKS

GRAPH COMPARING ENVIRONMENT STOCK VALUES



**CHART SHOWING CHANGES IN
ENVIRONMENT STOCK VALUES**

	Environment stocks value	Increase over previous period	% increase
March 31, 2012	\$1.00	n/a	n/a
April 15, 2012	\$2.21	\$1.21	121%
May 1, 2012	\$3.24	\$1.03	47%
May 15, 2012	\$3.37	\$0.13	4%
June 1, 2012	\$3.63	\$0.26	8%
June 15, 2012	\$4.59	\$0.96	26%
July 1, 2012	\$5.53	\$0.94	21%

**REASONS THAT THE ENVIRONMENT STOCKS CHANGED IN
VALUE (WHAT COMMUNITY MEMBERS DID; NEWS ITEMS)**

MARCH 31 – APRIL 15, 2012

Reason Positive/
Negative/
Neutral
An anonymous person donated money to Somerville Climate Action. (Positive)

MJND is a Somerville resident who composts her food scraps, and recycles paper and plastic. She uses reusable shopping bags. She also has metal cups and utensils at work, so she doesn't have to use disposable ones. All of this cuts down on the amount of trash she makes. (Positive)

On April 11, the **city** of Somerville announced that the Board of Alderman is working on zoning laws to encourage urban agriculture. This would allow farms (including indoor ones) to operate in Somerville. (Positive)

Somerville Climate Action organized a viewing of "Bag it", which is a documentary about the effects of plastic bags on the environment. The film was shown at the Somerville Theatre on April 11th. (Positive)

Tim Devin also composts his food scraps, and recycles paper and plastic-- and also reuses ziplock bags, and uses reusable shopping bags. He brought a cloth towel to work, so he doesn't need to use paper towels anymore. He also brought a plate, a cup, and utensils to work, so he doesn't have to use disposable ones. All of this cuts down on the amount of trash he makes. (Positive)

THE SOMERVILLE STOCK EXCHANGE

APRIL 16 – MAY 1, 2012

<u>Reason</u>	<u>Positive/ Negative/ Neutral</u>
Taking advantage of the new zoning law that promotes urban agriculture, Groundwork Somerville opened its South Street Farm on April 21st.	(Positive)
Maureen Barillaro is part of Somerville Climate Action, which is a “grass-roots collaborative working for a safe and stable climate while helping to build a resilient, just, and sustainable community.” As part of SCA, Maureen helps organize the annual Living Green festival, which is a family-friendly event that offers workshops, activities, information and hands-on learning about how to live a more Green and Sustainable life. She also helped organize the “350 Challenge,” which aims to encourage more environmentally-friendly acts. Most recently, she helped put together the “E-Waste Recycling Drive,” which got people to bring toxic electronics to a collection point in Davis Square instead of throwing them into the garbage.	(Positive)

FIRST QUARTERLY REPORT : ENVIRONMENT STOCKS

MAY 2 – MAY 15, 2012

<u>Reason</u>	<u>Positive/ Negative/ Neutral</u>
An anonymous person donated money to Somerville Climate Action.	(Positive)
On May 3, the Somerville Chamber of Commerce held a networking event and showcase for local green businesses, called B2Green.	(Positive)
Seth Itzkan hosts the monthly meetings for Somerville Climate Action at his office space in Davis Square.	(Positive)

MAY 16 – JUNE 1, 2012

<u>Reason</u>	<u>Positive/ Negative/ Neutral</u>
Megan R. spent 30 minutes pulling up Garlic Mustard (an invasive weed that is seeding right now) at Lexington Park while her daughter played.	(Positive)
Jonah Petri composts almost everything, and then recycles what he can. As a result, he only creates one bag of garbage every other week (for two people and a baby!). He bikes to work nearly every day (even during snowpocalypse last year); and when he can't bike, he takes the T. He has never driven to work, not even once! He bought a whole house electricity monitor, and uses it to study and minimize his electricity use. At night, his whole house draws 70 watts—which is less than a single computer & monitor.	(Positive)
The Environmental Protection Agency gave its annual “report card” evaluation of the Mystic River. It received a “D” grade. The overall quality of the river is pretty poor—due, in part, to the over 14,000 gallons of sewage that are dumped into it each year from local storm drains. The river's grade should increase this year, when the storm drains will cease emptying into the river.	(negative)
Sarah Howard runs Somerville-based Earthos institute, a nonprofit that promotes regional resource self sufficiency. She helps communities build local, cooperative economies with vibrant urban spaces. She hopes that one day communities around the	(Positive)

MAY 16 – JUNE 1, 2012 (CONT'D)

<u>Reason</u>	<u>Positive/ Negative/ Neutral</u>
world will know how to strategically use their resources (water, energy, arable land, biodiversity, people capital) to improve well-being of all, while respecting the limits of ecosystems. She's now working with Somerville Community Corporation and resident groups to create a food coop hub that will offer year-round local, healthy, affordable food and other needed amenities. This summer she will also try to improve her own food growing skills, to do her part to reduce dependence on food imports from water scarce regions like California.	(Positive)

JUNE 2 – JUNE 15, 2012

<u>Reason</u>	<u>Positive/ Negative/ Neutral</u>
Jessie Banhazi is the director of Somerville's Green City Growers, which she helped found in 2008. GCG installs raised-bed gardens in New England, for both homes and businesses. Raised-bed gardens allow people to grow vegetable in nontraditional spaces--as well as in yards that have lead contamination, which is common in urban areas. To date, GCG has installed over 350 gardens. Jessie's work is fueled by her passion for food, farming, and sustainability.	(Positive)
Mark Winterer is a co-founder of Recover Green Roofs, a design/build/maintain firm, building green roofs and walls on residential and commercial buildings. Green roofs create more green space in urban environments and help minimize the environmental impact of buildings.	(Positive)
The Growing Center gave a workshop on how to compost your food scraps (which is a way to recycle unused food, so that it doesn't end up in a landfill). This was one of many free workshops and events the Center hosts.	(Positive)

JUNE 16 – JULY 1, 2012

<u>Reason</u>	<u>Positive/ Negative/ Neutral</u>
Jenna Stark is an avid biker and uses it as her primary form of transportation.	(Positive)
Steven Nutter and the Somerville Climate Action depaved his backyard in October 2010. Now it is used as a private community garden growing everything from popcorn to brussel sprouts to bees. He does this because he loves food! Additionally, the three adults who live on the property don't own cars (neither do his neighbors). The idea of having the entire yard paved for parking didn't seem like a good use of space. Finally, without a yard to mow, he can save money and spend his weekends having eating fresh food with friends!	(Positive)
The city of Somerville launched a new website called "Somerville Urban Ag." It features information and tips on urban agriculture, and is part of the city's push to encourage more urban growing.	(Positive)
Mark Winterer planted grass seed on bare ground thereby increasing the permeability of the ground. This means the ground will absorb storm water instead of the storm water running right over the bare ground.	(Positive)

JUNE 16 – JULY 1, 2012 (CONT'D)

Reason

In June, **Tim Devin** and **MJND** helped remove the paving from someone's driveway, because the home-owner wanted to use the land as a garden. The depaving was organized by Somerville Climate Action, and over 20 volunteers helped out. In addition to creating more green space, this depaving reduces water run-off and the risk of flooding.

The US Court of Appeals upheld the **Environmental Protection Agency's new rules** on greenhouse gases (emissions that pollute the air, and add to global heat levels). These new rules will affect the emissions created by factories, power plants and cars. They will limit how much carbon dioxide newly-built factories can produce, and lays the groundwork for new standards on car emissions.

Positive/
Negative/
Neutral
(Positive)

(Positive)

OVERVIEW : CREATIVITY STOCKS

GRAPH COMPARING CREATIVITY STOCK VALUES

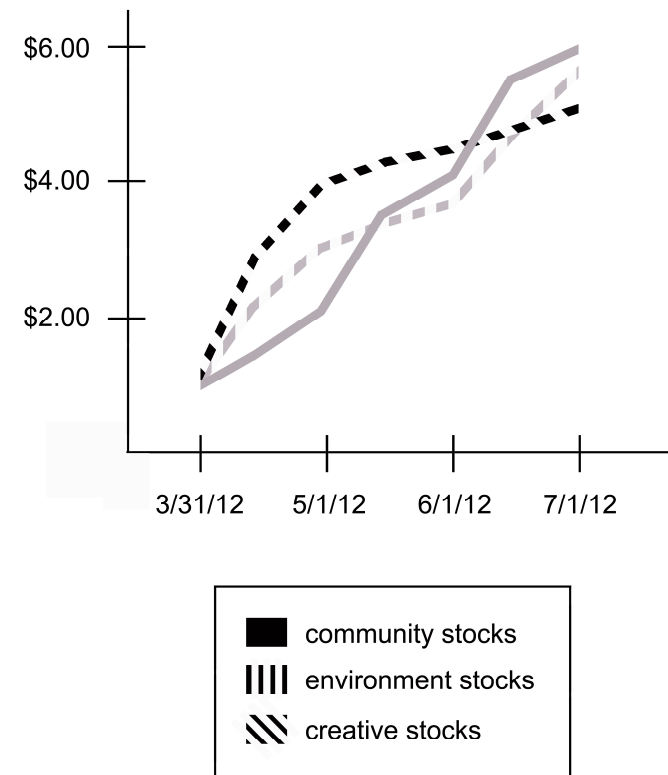


CHART SHOWING CHANGES IN
CREATIVITY STOCK VALUES

	creativity stocks value	Increase over previous period	% increase
March 31, 2012	\$1.00	n/a	n/a
April 15, 2012	\$2.87	\$1.87	187%
May 1, 2012	\$3.92	\$1.05	37%
May 15, 2012	\$4.22	\$0.30	8%
June 1, 2012	\$4.43	\$0.21	5%
June 15, 2012	\$4.67	\$0.24	5%
July 1, 2012	\$4.98	\$0.31	6.5%

REASONS THAT THE CREATIVITY STOCKS CHANGED IN
VALUE (WHAT COMMUNITY MEMBERS DID; NEWS ITEMS)

MARCH 31 – APRIL 15, 2012

Reason	<u>Positive/</u> <u>Negative/</u> <u>Neutral</u>
PJ donated money to the Somerville Arts Council.	(Positive)
Anyahlee Suderman painted a mural on a wall on Charlestown St.	(Positive)
EA served on the Somerville Arts Council board for 6 years (for 3 years as the chair). During that time, she helped organize numerous SAC events and fundraisers, and helped with the grant-giving process. She also helped run the Bizarre Bazaar. All of this was volunteer work.	(Positive)
On April 11, the Massachusetts House of Representatives announced its proposed budget for next fiscal year. It included \$1.3 less for the Massachusetts Cultural Council; which represents a 13% decrease in funding.	(negative)
An anonymous person donated money to the Somerville Arts Council.	(Positive)
Anyahlee Suderman works at the Creative Union Gallery in Union Square, where she manages the gallery's large pool of local volunteers, promotes, plans events and conceptualizes on going projects. Volunteers can be high school students or adults, and work 3 hours shifts weekly or bi-weekly. Get in touch if you want to volunteer or buy a gorgeous	(Positive)

THE SOMERVILLE STOCK EXCHANGE

MARCH 31 – APRIL 15, 2012 (CONT'D)

<u>Reason</u>	<u>Positive/ Negative/ Neutral</u>
work of art and help support one of the poorest populations in the world!	(Positive)
Loki has run an art gallery in Somerville for a number of years. She has also produced a large number of public events and fundraisers-- both as part of the gallery, and with the Arts Council.	(Positive)
Gregory Jenkins has been the director of the Somerville Arts Council for 11 years. As part of his job, he has helped organize a large number of events each year; and has been involved in fundraising for the Council.	(Positive)
Jon Bernhardt also served on the SAC board for 6 years, and as the chair for one year. He helped organize numerous SAC events, and helped with the grant-giving process. This was volunteer work.	(Positive)

FIRST QUARTERLY REPORT : CREATIVITY STOCKS

APRIL 16 – MAY 1, 2012

<u>Reason</u>	<u>Positive/ Negative/ Neutral</u>
David T. plays in Factory Seconds, a local 'honk' band. He recently published the zine 'Blind Date and Cyborg Sweetie,' with Alana K., and offered it for sale or trade at the recent Somerville Zine Thing.	(Positive)
Rajiv Ramaiah has been a working artist in Somerville since 2009. He creates digital art, and wood sculptures.	(Positive)
Earlier this year, the state House Ways and Means Committee recommended cutting \$1.2m from the Mass Cultural Council's budget. On April 24th, the House body just reversed this recommendation, and proposed to add another \$300k!	(Positive)
Alana K. made a zine with another Somerville community member (David T.), and wrote a blog post to celebrate and publicize local zine communities	(Positive)
Marji Gere is a Somerville-based musician, teacher and puppeteer. She and Dan Sedgwick produced the "Shelly and Zipper Show," which was a milk jug shadow puppet show with live music. She also produced the "Moondog Madrigal Puppet Show," a feature-length tabletop garbage puppet show with An Exciting Event, a 12-piece ensemble of puppeteer/musicians; and wrote and illustrated the Moondog Madrigal Puppet Show book, which was formatted and handmade by Seattle bookmaker	(Positive)

THE SOMERVILLE STOCK EXCHANGE

APRIL 16 – MAY 1, 2012 (CONT'D)

<u>Reason</u>	<u>Positive/ Negative/ Neutral</u>
Moriah Neils and members of An Exciting Event. Other ventures included building a cranky show, putting together a toy theater piece, making a few marionettes, and making a teddy bear completely out of old clothes for her 4-year-old nephew.	(Positive)
Rajiv Ramaiah has volunteered for Somerville Open Studios for the past two years.	(Positive)
On April 28th, the Washington Street Art Center (in Somerville) & Rifrákt hosted "The (In)visible Artists Town Hall". The meeting focused on ways to make the Boston area better known for the arts.	(Positive)
Marji Gere composes and rehearses xenharmonic (sometimes called microtonal) music with Dan Sedgwick, and friends in Illinois. She also rehearses and performs violin/piano concert pieces with Dan. She works as a violinist/camp director at Apple Hill Center for Chamber Music, a summer music festival in Sullivan, NH; and teaches weekly private violin and piano lessons to youth in Charlestown. She playing violin in the Boston Public Quartet, a professional string quartet-in-residence in Boston Public Schools. With the Boston Public Quartet, Marji co-directs musiConnects, the non-profit organization that gives free music lessons and chamber music education to children in Mattapan and Roslindale.	(Positive)

FIRST QUARTERLY REPORT : CREATIVITY STOCKS

MAY 2 – MAY 15, 2012

<u>Reason</u>	<u>Positive/ Negative/ Neutral</u>
Neil Horsky leads creativity workshops at Creative Union Gallery in Union Square using arts-based games of his own invention. Participants include Somerville community members, artists, educators, and game enthusiasts	(Positive)
Somerville artists opened up their spaces for Somerville Open Studios . The annual event featured over 400 artists this year.	(Positive)

THE SOMERVILLE STOCK EXCHANGE

MAY 16 – JUNE 1, 2012

<u>Reason</u>	<u>Positive/ Negative/ Neutral</u>
Susan Putnins volunteered for the Arts at the Armory iBall.	(Positive)
The Washington Street Art Center is home to about a dozen artists. It also has a gallery, and hosts a number of events. For instance, recently it hosted a launch party for a clothing company called La Parca recently; a show of a number of local bands; a Eurovision watching party; and a number of art shows.	(Positive)
An anonymous person donated money to the Somerville Arts Council.	(Positive)
On May 19th, the Arts Council put together the second annual Porch Fest . Over 100 musicians gave free concerts from front porches of homes in Somerville.	(Positive)

FIRST QUARTERLY REPORT : CREATIVITY STOCKS

JUNE 2 – JUNE 15, 2012

<u>Reason</u>	<u>Positive/ Negative/ Neutral</u>
Ron Newman has volunteered for a number of years at Somerville Arts Council events, including ArtBeat and the Illuminations Trolley Tour.	(Positive)
Mihai Dinulescu is member of Artisan's Asylum, which is a large, shared warehouse that serves as the studio and workspace of artists, tinkerers, and various other creative Somerville people. He makes movies. He is also part of CEMMI, the Collaborative Electronic Mixed Media Institute, which "inspires, enables, and promotes technological creativity by providing education, shared resources, and events for members, students, and the public at large."	(Positive)
On Sunday, June 3th, the city shut down part of Broadway for the first SomerStreets festival of the year. Despite the rain, hundreds and hundreds of people came out to watch the parade, hear bands, and mingle with their neighbors.	(Positive)

JUNE 16 – JULY 1, 2012

Reason

On June 27th, there was a talk on zines at the Armory, with was organized by the Arts Council. **Two long-time zine-makers** told a full house about their experiences with zines and the zine community.

On June 16th, the **Somerville Arts Council** had a fundraiser at PA's lounge. It was a Modern Lovers tribute show, and a number of local bands played covers.

Positive/
Negative/
Neutral
(Positive)

(Positive)

LIST OF STOCKHOLDERS

As of July 1, 2012, the following people held Somerville stock.

Alain Jehlen
Alana K.
Anyahlee Suderman
Barry Rafkind
David Dahlbacka
David T.
Dvora Jonas
EA
Eileen Feldman
Gregory Jenkins
Jenna Stark
Jessie Banhazi
Joe Beckmann
Jon Bernhardt
Jonah Petri
Kristin Parker
Linda Conte
Loki
Marji Gere
Mark Winterer
Maureen Barillaro
Maureen McNulty
Megan R.
Michael Messina
Mihai Dinulescu
MJND
Neil Horsky
PJ
Rajiv Ramaiah
Ron Newman
Sara Davies

Sarah Howard
Seth Itzkan
Steven Nutter
Susan Putnins
Tim Devin
Warren Goldstein-Gelb
Zachary Zasloff
and a number of anonymous people

Do you want to add your name to the list? Get in touch!
Email us at somerville.stock.exchange@gmail.com